

New Ideas
To use sewing (quilting) to connect people to their community
The planted an indoor garden
Helped each other say name
Built garden boxes at different heights so the plants could grow
Started having a garden tour
Teenagers wrote letters to each other
Teacher introduced them to each other
They didn't speak English when they moved from Mexico



RVE
BACK TO
SCHOOL
2020-21

What it is like
to be a
teacher
in a
classroom

OUR GOAL

Welcome to Rapid Valley Elementary for the 2020-21 school year.

We are excited to start the year and like many of you are anxious and nervous as well.

The academic, physical, and social-emotional development of our students is very important to us. Rapid Valley Elementary is part of the Rapid City School District and we have worked to align our back to school plan and daily practices with the Board of Education's plan to best keep students and staff safe and still be part of an engaging learning environment and a positive learning community.

This document contains key information about the return to school plan and safety practices we will implement this year. We recognize this plan and practices may need to change and be revised based on district decisions and guidance.

Our goal with this handbook is for each family to have the information they might need and frequent questions answered at your fingertips.

This plan is not specific to the varying phases or levels but the general protocol at both.



COVID-19 PROTOCOLS

As per Rapid City Area School Board of Education the following are primary protocols for all students, staff, and visitors who attend Rapid Valley Elementary

- Masks are required for all staff
- Masks are required for students in all classrooms
- Masks required on all school buses
- Screening of Students-Completed at home
- Screening of staff-Completed at home
- Visitors on site or in building by appointment need to wear a mask and screen upon entry
- Anyone awaiting results from a Covid test should reschedule their appointment



RVE-KEEPING US ALL SAFE

Rapid City Area Schools Together Again and Back to School Plan as well as other Covid-19 related information can be found at rcas.org

RVE's steps in following the RCAS Plan focused on our building routines, minimizing risk, maximizing distance when we can, and other building practices we could implement.

We have outlined our steps in the following areas:

- Arrival to School/Dismissal
- Breakfast
- Hallways and Transition to Electives (Music, PE, IMS/Library)
- Recesses
- Classrooms
- Lunch
- Office Areas
- Nursing and Sick Student Procedures
- Bathrooms

We have included contact information along with a page devoted to Family Communication and Online Learning Tools



OFFICE

Our office staff is here to help you! Please feel free to call anytime during office hours.

- Please know due to Covid-19 that all guests including family and parents wanting to visit the school need to call and schedule an appointment.
- Guests entering the building must follow the Covid-19 Guidelines as set forth by RCAS Board of Education.
- We now have voice mail capability, if no answer please leave a message
- Checking students out early or for appointments- Please call ahead and upon arrival wait at front door or in vestibule for student.



Office Hours

7:30-4:00

605.393.2221

ARRIVAL/DISMISSAL AND BREAKFAST

Arrival/Dismissal

RVE will be offering a "slow" opening to the day. Students will come directly to their wing door or line up spot and enter to go to the classroom starting at 7:50 AM-but NO earlier.

Wing door entries will be supervised until 8:05 for student entry. Any student arriving after 8:05 will need to use the front door and get a tardy slip.

This format will allow us to avoid large lines waiting outside together, in hallways as we enter, and staggering students at closets in the classrooms, along with more time for hand washing and morning routines.

- Classes and lines separated with signage and visuals posted
- Dismissal will begin at 2:45 with bus and daycare vans along with K-1.
- Dismissal will be staggered and students will wear masks as they exit.

Breakfast

Free breakfast for all students until end of 2021 school year.

Students can meet at the flag pole at 7:35 and enter the north door before 7:55 for breakfast.



There is NO supervision until 7:50 in the building or on the playground. With our new Covid Safety responses it is important for students to not be dropped off early and before this time.

CLASSROOMS

- Masks worn by staff and students.
- Mask breaks for students and staff built into classroom schedule
- Classroom space arranged to provide distance when possible
- Classroom routines to include hand washing times throughout day
- Students will not share supplies or materials
- Supplies and materials sanitized between use
- Snack time staggered for groups of students when applicable
- Assigned Seating



LUNCH

We have made the following revisions and implemented practices to increase distance between students as they transition to lunch, eat lunch, and leave lunch along with other hygiene routines.

- Only one grade level at a time eating during each lunch period
- Extend tables and eating area to include Multipurpose room and half of gym
- 8 Students Per Table
- Designated Enter and Exit for one way traffic in and out of lunchroom
- Extra supervision
- Hand washing before arrival
- Sanitize hands after when needed
- Stagger dismissal of students
- See other RCAS guidelines when provided



school
lunch



HALLWAYS AND ME'S

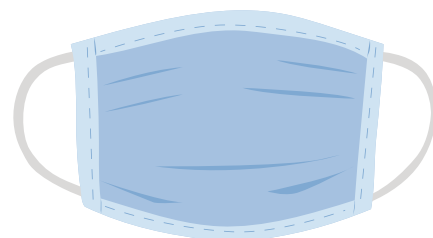
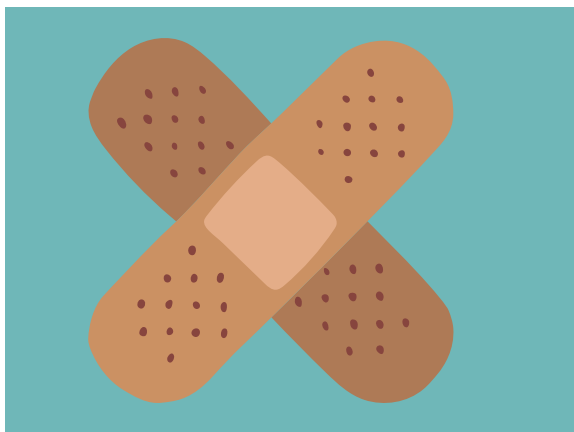
- One way traffic when possible
- Stagger classes in grade levels when going to Electives and Lunch
- Use of outside routes and paths when weather allows to move about school
- Follow designated floor visuals and posted signage
- Follow PBIS guidelines of "Hands, Feet, Body to Ourselves"
- Music teacher and IMS will travel to classrooms for instruction
- Mask worn in PE unless PE is outside



**ME's also known as
"specials" are now
called Mandatory
Electives
These include Music,
PE, IMS**

NURSING-SICK STUDENT- COVID-19 PROTOCOLS

- If a staff member observes any signs of illness, nurse and office staff will go to classroom to meet with student to screen for illness
- Students with temperatures of greater than 100.4 will be sent home
- ALL students with a temperature at or above 100.4 will be isolated until parent/guardian/emergency contact can pick up-including bus students



RECESSES

The following steps will be utilized when feasible:

- Staggered exit and entry of wing doors
- Designated Zones
- Hand hygiene before and after
- No equipment brought from home



BATHROOMS

- No whole class bathroom breaks
- Use bathroom closest to wing



SCHOOL COMMUNICATION AND TECHNOLOGY

ClassDojo

This year we will be utilizing ClassDojo as our main communication school wide. This application can be downloaded on a cell phone, or accessed on a personal computer. School announcements, classroom newsletters, updates from the librarian, etc. will all be communicated on Dojo this year so please make sure to check your notifications at least twice per week.



Facebook

If you have a Facebook account make sure to follow Rapid Valley Elementary. Mrs. Daniel will continue her Live morning announcements in addition to posting other fun events such as: read aloud's, important updates, and other need to know items.



Google Classroom

Our K-5th grade students will all be using the learning platform Google Classroom this year for both face to face instruction and off campus (level 3) learning when needed. Students will be taught how to access and use this platform to complete tasks independently right away this school year. You will get more information from your classroom teacher about how this technology works, and our expectations with it as we get closer to the start of school. We will also be incorporating a Google Chrome extension called Kami into our instructional routines to make learning more engaging, and provide students with feedback on their learning.



Phase 2-**Yellow** Phase

When does my student come to school?

- Students with last names of A-K will come on Monday and Tuesday
- Students with last names of L-Z will come on Wednesday and Thursday
- Students with siblings at multiple grades will come on the days assigned to the oldest sibling by that sibling's last name.
- Requests to switch days are discouraged to align with siblings at other grade levels
- We have sent the calendars for the weeks that we have a Monday holiday and students would then attend on Fridays.

The first week!

- Students will come on assigned days
- We will not have computers to students yet, so please check Classroom DoJo for any information from teachers on what students might need to do from home on those days.

What does learning look like at school when my child is there?

This will look like the most “typical” school day that we are familiar with. Students will be provided whole group instruction, small group learning, and independent practice in core content areas and specials. This could happen face to face or via lessons and tasks in Google Classroom

What does learning look like when my child is not at building?

- Learners will be assigned tasks and learning via Google Classroom that they can access on their own schedule. This will not be hours of instruction or sitting in front of or on their computer.
- Tasks and learning will be assigned via Google Classroom and will include ways for students to complete these and have teacher review them. Attendance on these days does include students being engaged and completing the work.
- There will be opportunities for students to join via Zoom for small group or whole group activities

Resources at Home

Streams will be sent home with a case each day
PTA is sponsoring a supply kit for each child to have at home. This will include school basics and some art supplies for students to keep at home.

Internet Assistance

Internet-flyer and assistance available-contact office


Assistance and Office Hours

Grade level teachers will be setting up “Office Hours” on Friday’s to connect with parents, students, and provide help

OFF CAMPUS LEARNING

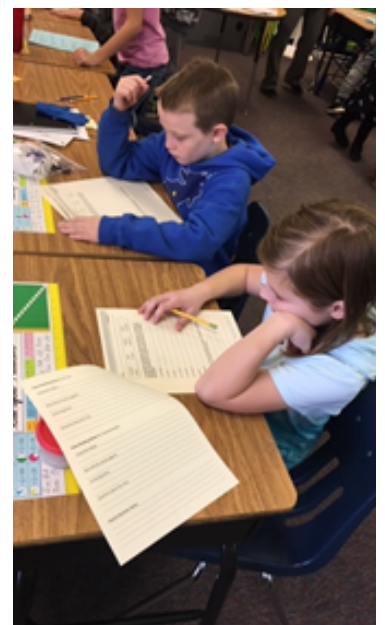
In the event that a building or the District needs to close for a period of time due to entering Level 3, teachers will use best practices in instruction to deliver content to students in an online format.

What we know:

- All students will be provided a computer for off campus learning.
- Students will access all off campus learning through *Clever*
 - Clever is loaded on student computers and can be found in the Google Chrome browser (Look for the  in the upper right corner of the screen).
- Students will be assigned new instruction and assignments during this time---feedback will be given on tasks.
- Instruction will be made with flexible scheduling in mind.
- Students will be taught how to access and use technology platforms independently, and we challenge you to allow them to continue this procedure during off campus learning.

Please note that the Off Campus model will look very different than it did in the spring.

Students will be accountable for attendance and work completion.



Rapid Valley Instructional Model

RVE Level 1-Green

Instructional Model & Definition		LEVEL 1				
		WHAT IT LOOKS LIKE				
		Direct Instruction	Small Group Instruction	Independent Practice	Specials	
<p>On-Campus Learning: Monday-Thursday</p> <p>Instruction will resemble regular instructional programming with additional health and safety precautions.</p> <p>Learners will have whole group instruction, small group learning, and independent practice in core content areas and specials.</p>		Live and/or recorded lessons accessed in person or through Google Classroom	Face to face small groups at least 3x each week either in person or remotely.	Practice activities, assignments, assessments, and projects delivered through a mix of digital and hands on materials	Live Lessons	
<p>E-Learning Fridays</p> <p>Counseling lessons, projects, choice boards, teacher check <u>ins</u>, <u>office</u> hours, social emotional lessons, assessments</p>		Recorded lessons and students assignments through Google Classroom that can be accessed at any time.				
		Monday	Tuesday	Wednesday	Thursday	Friday
100% of Students Attend	New Content Synchronous	New Content Synchronous	New Content Synchronous	New Content Synchronous	New Content Synchronous	E-Learning Day Review, Practice, Enrichment All Students Off-Campus

Rapid Valley Instructional Model

RVE Level 2-Yellow

Instructional Model & Definition		LEVEL 2				
		Direct Instruction	Small Group Instruction	Independent Practice	Specials	
<p>50/50 Two Days on/Two days off</p> <p>Instruction is a hybrid of synchronous and asynchronous learning.</p> <p>Learners will have whole group instruction, small group learning, and independent practice in core content areas and specials.</p>	<p>Recorded lessons available through Google Classroom that can be accessed at any time.</p> <p>Face to face instruction</p>	<p>Small group face to face and Zoom opportunities</p>	<p>Practice activities, assignments, assessments, and projects delivered digitally through Google Classroom.</p>	<p>Optional lessons and activities available through Google Classroom.</p>		
	<p>Monday</p> <p>New Content Synchronous & Asynchronous</p> <p>Group A <u>On</u> Campus</p> <p>Group B Off Campus</p>	<p>Tuesday</p> <p>New Content Synchronous & Asynchronous</p> <p>Group A On Campus</p> <p>Group B Off Campus</p>	<p>Wednesday</p> <p>New Content Synchronous & Asynchronous</p> <p>Group B On Campus</p> <p>Group A Off Campus</p>	<p>Thursday</p> <p>New Content Synchronous & Asynchronous</p> <p>Group B On Campus</p> <p>Group A Off Campus</p>	<p>Friday</p> <p>E-Learning Day</p> <p>Review, Practice, Enrichment</p> <p>Synchronous & Asynchronous</p> <p>All Students Off-Campus</p>	
<p>50% of Students Attend</p>	<p>Monday</p> <p>New Content Synchronous & Asynchronous</p>	<p>Tuesday</p> <p>New Content Synchronous & Asynchronous</p>	<p>Wednesday</p> <p>New Content Synchronous & Asynchronous</p>	<p>Thursday</p> <p>New Content Synchronous & Asynchronous</p>	<p>Friday</p> <p>E-Learning Day</p> <p>Review, Practice, Enrichment</p>	

Group A = Students whose last name begins with A-K
 Group B = Students whose last name begins with L-Z

Families who have students with different last names will be assigned by the name of the oldest sibling in the district.

RVE Remote Learning

Instructional Model & Definition		WHAT IT LOOKS LIKE			
		Direct Instruction	Small Group Instruction	Independent Practice	Specials
Off-Campus Instruction is a hybrid of synchronous and asynchronous learning. Learners will have whole group instruction, small group learning, and independent practice in core content areas and specials	Distance Learning Parent Choice Instruction is a hybrid of synchronous and asynchronous learning. Learners will have whole group instruction, small group learning, and independent practice in core content areas and specials. Learners will be expected to "attend" their small group meetings and to complete tasks. Access to the internet is required for this option.	Recorded lessons through Google Classroom that can be accessed at any time. Zoom whole class opportunities to connect and instruction	Zoom small group instruction at least 3x each week	Practice activities, assignments, assessments, and projects delivered digitally through Google Classroom.	Optional lessons and activities available through Google Classroom.
	Monday New Content Synchronous & Asynchronous	Tuesday New Content Synchronous & Asynchronous	Wednesday New Content Synchronous & Asynchronous	Thursday New Content Synchronous & Asynchronous	Friday E-Learning Day Review, Practice, Enrichment Synchronous & Asynchronous Distance learning Review, Practice, Enrichment Synchronous & Asynchronous
Off Campus Learning	Monday New Content Synchronous & Asynchronous	Tuesday New Content Synchronous & Asynchronous	Wednesday New Content Synchronous & Asynchronous	Thursday New Content Synchronous & Asynchronous	Friday E-Learning Day Review, Practice, Enrichment Synchronous & Asynchronous Distance learning Review, Practice, Enrichment Synchronous & Asynchronous
Distance Learning	Monday New Content Synchronous & Asynchronous	Tuesday New Content Synchronous & Asynchronous	Wednesday New Content Synchronous & Asynchronous	Thursday New Content Synchronous & Asynchronous	Friday E-Learning Day Review, Practice, Enrichment Synchronous & Asynchronous Distance learning Review, Practice, Enrichment Synchronous & Asynchronous

HOW TO CONTACT US



605-393-2221



Email

jerrie.emory@k12.sd.us
cher.daniel@k12.sd.us
kirstin.livermont@k12.sd.us

All other staff can be emailed using first and last name and same format

OUTDOOR SPACES AND CLASSROOM ENTRIES

Hierarchy of Use for Outdoor Spaces

Outdoor PE



Recess

Classrooms

We are so fortunate at Rapid Valley Elementary to have a large outdoor space as our campus. In an effort to socially distance, and allow students breaks from masks we have created dedicated zones and additional entrances and exits to be used by staff and students. Playground areas will be reserved for use during grade level recesses throughout the day.

Please see the map below to see our outdoor areas and new entrance/exits.

